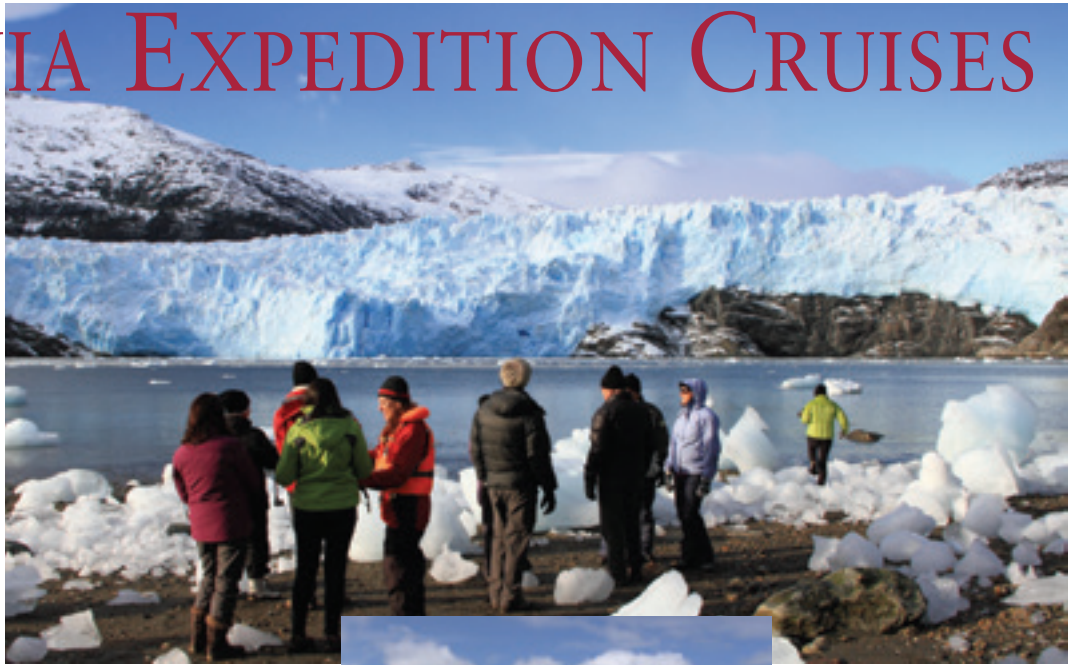


PATAGONIA EXPEDITION CRUISES

web veloso.com/australis

Cruise through the icy waters and remarkable fjords of Tierra del Fuego, via the Straits of Magellan and the Beagle Channel. Admire breathtaking landscapes of snowcapped mountain peaks, glaciers and Patagonian forest, to visit the most inaccessible reaches of South America.



Punta Arenas to Ushuaia • 4 nights



PUNTA ARENAS - USHUAIA

Stella Australis

Fjords of Tierra del Fuego Cruise • 4 nights
Every Saturday

Day 1 Board the ship in the afternoon for a cocktail reception with the captain, before the evening departure for Tierra del Fuego.

Day 2 In the morning arrive at Marinelli Glacier, where we enjoy a walk to a beaver dam in the midst of the Magellanic forest and see a colony of elephant seals. Later we visit Tucker Islet's colonies of Magellanic Penguins and Cormorants.

Day 3 Sail through the Beagle Channel to Pia Glacier. We take a short hike to a lookout point with a spectacular view of the

entire glacier. Later we sail through the majestic "Glacier Alley".

Day 4 Visit Cape Horn National Park, a UNESCO Biosphere Reserve, and land (weather permitting). To visit this mythical place known as the "End of the Earth" is a rare privilege. Later, we go ashore at historic Wulaia Bay, once the site of one of the region's largest indigenous settlements, and walk through Magellanic forest

Day 5 Arrival in Ushuaia in the morning.

USHUAIA - PUNTA ARENAS

Stella Australis - Discover Patagonia Cruise • 3 night

Departs Every Wednesday

Day 1 Board the ship in the afternoon for a cocktail reception with the captain, before the evening departure for Tierra del Fuego.

Day 2 Visit Cape Horn National Park, a UNESCO Biosphere Reserve, and land (weather permitting). To visit this mythical place known as the "End of the Earth" is a rare privilege. Later, we go ashore at historic Wulaia Bay, once the site of one of the region's largest indigenous settlements, and walk through Magellanic forest.

Day 3 We sail through small channels to enter the spectacular De Agostini Sound, in the heart of the Darwin Mountains. In the afternoon we visit the Águila Glacier where we will take an easy walk. It is the perfect opportunity to enjoy the beauty of Patagonia's cold rainforest.

Day 4 We go ashore early to Magdalena Island to see a colony of Magellanic Penguins during our walk to a historical lighthouse. Disembark in Punta Arenas.



CHILE

Few South American countries boast a landscape and climate as diverse as Chile. Although on average only 180 kilometres wide, it stretches over 4,000 kilometres from north to south which, in European terms, represents a distance and range of climates from Norway's icy northern tip to the barren sands of the Sahara Desert in Africa. In between, Chile offers fertile valleys well-known for their high quality wines, and serene lakes with a backdrop of snowcapped volcanoes and the Andes mountain range.

Photographs and information: [web veloso.com/chile](http://web.veloso.com/chile)

CONTENTS

SANTIAGO	89
SERENO TOUR	90-91
EASTER ISLAND	91
SELF-DRIVE LAKE DISTRICT	92
ATACAMA LODGES	94-95
CRUISE FJORDS	96
CRUISE TIERRA DEL FUEGO	87
AZUL TOUR	97
TORRES DEL PAINE	98-99

Desert

Mummies and treasures of the Atacameño culture lie hidden in the vast stretch of arid desert that makes up northern Chile. This area of supreme natural beauty encompasses salt lakes, the stunning Tatio Geysers and picturesque villages.

Lake District

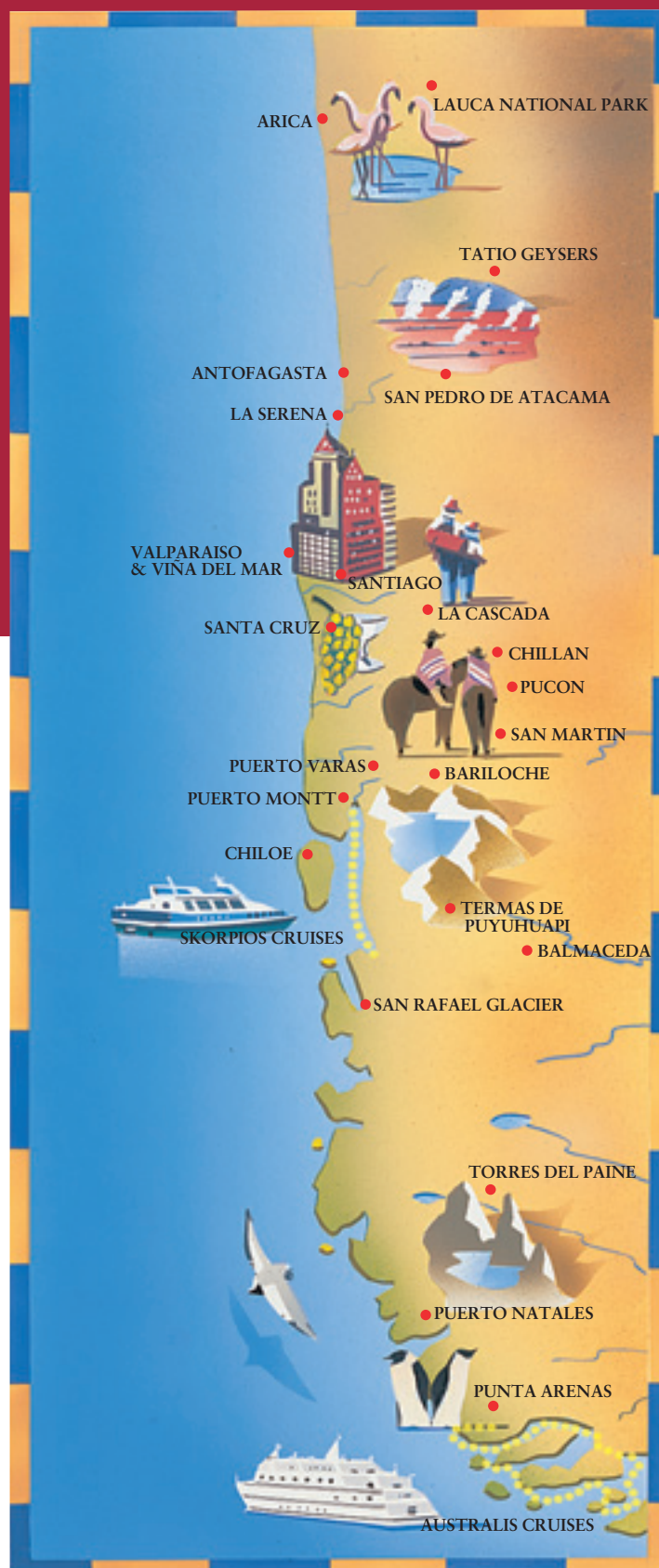
Fertile countryside punctuated by snow-capped volcanoes and brilliant emerald lakes provide the visitor with a variety of excursions and activities, such as walking, horse riding, skiing or camping under the stars in the Andes.

Patagonia

Southern Chile embraces the romantic wilderness of Patagonia, a land of glaciers, immense granite massifs, and the barren, windswept tip of South America where the Andes sink into the icy waters. Place names given by early navigators tell the story of their experience: Desolate Bay, East and West Furies and Useless Bay.



Flamingos at Lauca National Park





Magnificent mountain views in the high Andes at Cajon del Maipo, two hours from Santiago

SANTIAGO & SURROUNDINGS [web veloso.com/santiago](http://veloso.com/santiago)



Santiago de Chile with the backdrop of Cordillera

The conquistador Pedro de Valdivia founded Santiago de Chile in 1541 at the point where the Mapocho and Maipo Rivers meet. Surrounded by mountains, the city is an ideal base to explore both the Andes and Pacific Ocean coastline. Valdivia marked the centre of colonial Santiago with the Plaza de Armas and his house was located where the central Post Office now stands. This clean, tree-lined square is now a focal point for local people, with artists in Bohemian Bellavista and lovers at Santa Lucia.

Valparaiso

Valparaiso is a city of character and culture, whose wealth and importance was established by its port in the days before the Panama Canal. The downtown area is surrounded by hills covered in houses of different colours, its steep and winding streets are ideally explored on foot, or by riding the funicular railways which connect the hillside neighbourhoods. Many of the grand houses have been converted into boutique hotels, with terraces and views out over the Pacific Ocean.

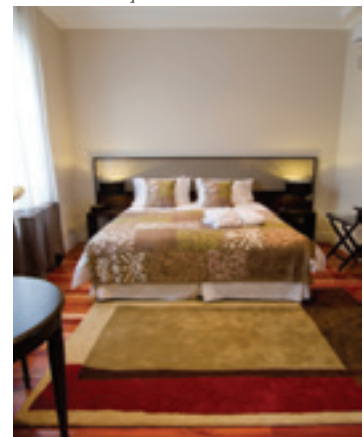
Excursions available:

- Cajon del Maipo Lodge for walks in Andean mountains (top of this page)
- Santa Rita Country House and Canvas de Maipo
- Concha Y Toro Vineyard
- Undurraga & Veramonte Vineyards
- Wines of the Casablanca, Maipo, Aconcagua Valleys
- Isla Negra & Pablo Neruda's Museum
- Horseriding the Andes
- Folkloric Night Tour & Dinner
- Handicraft Market & Santa Lucia Hill
- Valle Nevado(skiing possible)
- Viña del Mar & Valparaiso

Lastarria Deluxe Boutique

This handsome townhouse, built in 1927, has been renovated and converted into a luxury boutique hotel, with all its original architectural splendour. Filled with European style and sophistication, the 14 rooms were designed to make guests feel at home. The hotel retains the back garden of the original house, complete with a small pool. The hotel has a simple snack bar, but there are many bars and restaurants nearby.

Lastarria Boutique Hotel



PRICES

2 SHARING SEASONS*	3 NIGHTS INCLUDING TRANSFERS	EXTRA NIGHT
LASTARRIA BOUTIQUE		
01Jan-30Apr; 1Oct-31 Dec	£446	£122
01May -30 Sep	£385	£103
SU MERCED BOUTIQUE		
01Jan-30Apr; 1Oct-31 Dec	£303	£75
01May -30 Sep	£277	£67

Prices are per person in a Standard Room for double occupancy including accommodation and Breakfast, tax, service charge and transfers.
*Prices for Triple room, Single Room on request.

Santiago's Presidential Palace



Su Merced Hotel First

Su Merced is a renovated townhouse, small boutique hotel with only 9 rooms. Its location in the Lastarria area opposite the park in the heart of Santiago making it ideal for visiting the artistic, bohemian area of Bellavista, the main square Plaza de Armas, Presidential Palace and downtown. The rooms are comfortable and modern though rather small, and the hotel has a restaurant and bar on which doubles as the reception.

HIGHLIGHTS OF CHILE

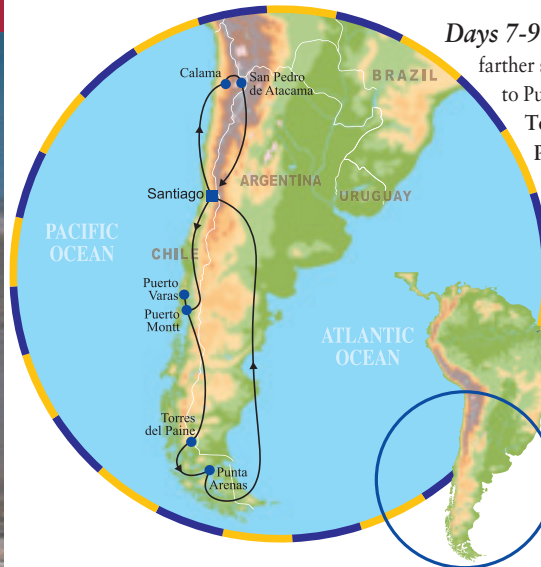


Tatio Geysers, Day 11

Discover the magnificent landscapes that lie within this thin ribbon of land between the Andes and the Pacific. This tour which will lead you through three extremes - the mountainous Atacama desert, silent and timeless; the jade green lakes and mighty volcanoes of the Lake District; and Southern Patagonia, a wild, windswept land of mountains and glaciers framed by the majestic granite peaks of Torres del Paine National Park.



Grey Glacier, Torres del Paine National Park, Day 9



Days 7-9 Our journey continues farther south, as we take a flight to Punta Arenas and transfer to Torres del Paine National Park where we stay for 3 nights at a comfortable lodge within the park for ease of access and the best walks and scenery. Our days are spent walking in this awe-inspiring area, where dramatic granite massifs rise from the earth, surrounded by glaciers, lakes and gnarled Magellanic beech trees. The walks vary from six

Days 1-4 Depart any day of the week for Santiago, arriving the next morning. Afternoon tour of the city, surrounded by the Andes stretching into the distance. Santiago offers bohemian areas, large craft markets, grand central squares and the Cerro San Cristóbal, a hill which can be reached by funicular railway, for superb panoramic views of the city. (B) Optional excursions to Valparaíso and Viña del Mar on the coast, the vineyards of Santa Cruz or the surrounding valleys.

Day 5 Fly to Puerto Montt, capital of the lush Lake District and transfer to Puerto Varas. Afternoon free to explore the city and surroundings at leisure. (B)

Day 6 A full day excursion to the emerald green waters of Lago Todos Los Santos, visiting Petrohué Falls that flow over the sculpted basalt rock. Continue to Osorno Volcano, with views of the surrounding hills covered in forest, and the glistening deep blue lakes. (B)

hour treks, to 1½/hr strolls. Whichever you choose, the scenery will be unforgettable. (B)

Day 10 Transfer to Punta Arenas for your afternoon flight to Santiago. Overnight in Santiago near the airport. (B)

Day 11 Flight to Calama and transfer through the driest desert in the world to San Pedro de Atacama. Stroll in the village. Witness the sunset at Pucará de Quitor, the ruins of a 700-year-old Indian fortress, with the Andes mountains stretching north and south as far as the eye can see. (B)

Day 12 Tour of San Pedro village including the ancient church. There is an Archeological Museum, which houses fascinating examples of indigenous Atacameño artefacts including ceramics, metalwork and textiles. In the afternoon we visit the eerie Valley of the Moon for sunset, when the colours and forms of the naturally sculpted salt mountains are at their most hauntingly beautiful. (B)

PRIVATE INDIVIDUAL TOUR GUIDELINE PRICES - Departure everyday

SERENO Tour	Tourist			First		
	1 Single Traveller	Travelling Together Double	Own Room	1 Single Traveller	Travelling Together Double	Own Room
25Dec-21Jun, 17Aug-12Dec	£5796	£4335	£5325	£7095	£5121	£6183
22Jun-16Aug, 13Dec-24Dec	£5884	£4423	£5413	£7183	£5209	£6271

GUIDELINE TOUR PRICES are all per person, subject to availability, as all services are booked when you pay your deposit. Please refer to our website veloso.com for current prices and any special offers available. To obtain a Guaranteed Price for your travel dates, please call 020 8762 0616, email travel@veloso.com, or contact our appointed travel agents. Prices for Special Events, New Year's Eve, Christmas, Easter on request.

FLIGHTS on IBERIA and LAN departing from London and UK Airports, Internal Flights and Taxes, are included. UPGRADE to Business Cabin seat add: £2119 in High Season / £2206 in Low Season

HOTELS used, descriptions and photographs on our website, veloso.com/sereno

TAILOR-MADE SERVICE: Please enquire for a personalised itinerary to fulfil your individual requirements. We can combine hotels, change route, excursions and we can offer triple rooms, suites and De Luxe Hotels.



Torres del Paine, Days 7-9

Day 13 A very early morning departure for **Tatio Geysers**. This extraordinary sight is best seen as the first rays of the sun catch the forceful jets and steam that rise from the earth. Stop on the way back to visit a delightful oasis, village of Chiu Chiu. (B)

Days 14-15 Excursion through the timeless space of the desert, to the village of Toconao, set on the edge of the **Salar de Atacama**, an immense dry salt lake that stretches into the distance towards a row of snow-capped volcanoes. Return to Santiago in the afternoon for 1 night and fly home arriving on Day 16. (B)

The Sereno Tour departs every day - 16 days INCLUDING: 13 nights' accommodation and breakfast (B), all flights (2 overnight), transfers, excursions, English-speaking guides, transport and meals as shown. Please see pages 190-193 for further details of what is included.

Optional - Arica & Lauca National Park

Days 15-16 Fly to Arica, Chile's northernmost city, which enjoys year-round temperatures of 22°C. We visit the city and the Archeological Museum, which houses a fascinating and well-

preserved collection of mummies, weavings and pottery. The following day take a scenic drive up to **Lauca National Park**, arriving first at the charming village of **Parinacota**, with its 17th century church, and on to **Lake Chúnigara** (4,600m), set against a stunning backdrop of snow-capped volcanoes, and home to varied and abundant wildlife, including vicuñas, vizcachas and flamingos. (B)

Optional - Valparaíso

Days 15-17 Valparaíso's picturesque setting, enhanced by the surrounding hills that seem to dive into the ocean, is an ideal place to unwind and relax by the ocean. Walk along the picturesque promenades and absorb the artistic atmosphere as you breathe the fresh air of the Pacific. (B)

Optional - Maipo Canyon

Days 15-17 Stay in the Maipo Valley surrounded by Andes mountains, where the air is pure and the views spectacular, enjoy different activities such as horse riding, trekking various trails or bathing in the thermal waters.

Optional - Wine Region

Days 15-17 Stay at one of our preferred vineyards located in the

Casablanca Valley, La Casona at Matetic or the Colchagua Valley & Santa Cruz where famous vineyards such as Viña Casa Silva and Santa Rita are located and learn about the wine production, growing grapes and tasting of Chilean Wines.

Optional - Cruises pages 87, 96 Tierra del Fuego & Patagonia



Moais on Easter Island

EASTER ISLAND

In the South Pacific, some 2,500 miles from Chile, Easter Island is scattered with *moai* stone statues and fascinating *ahu* platforms, remnants of an ancient culture and dramatic history, culminating in extinction.

web veloso.com/easterisland

4 days • 3 nights

Days 1-2 On arrival transfer to your hotel. Rest of day at leisure. The following day visit Vaihu and Akahanga *ahus*, Rano Raraku, the quarry where the *moais* were made, and Ahu Tongariki with its 15 restored statues and nearby ancient petroglyphs. Drive to Anakena Beach, watched over by the impressive Ahu Nau Nau statues, where we stop on a white sandy beach for a picnic and a swim in the Pacific Ocean.

Day 3 Half day excursion to Rano Kau visiting the crater lake and ceremonial village of Orongo, where the birdman culture once chose its king. Afternoon at leisure with time to explore the town of Hangaoroa and the Museum of Sebastian Englert.

Day 4 Transfer to airport for departure flight back to mainland Chile.

5 days • 4 nights

An extra day takes you across the island to see Ahu Akivi and its seven *moais* lined by the ocean shore and facing inland. We also visit Ana Te Pahu Cave and continue to the quarry of Puna Pau. Afternoon at leisure exploring, walking or unwinding.

PRICES

NO OF TRAVELLERS	2 SHARING ROOM
4 Days • 3 nights All year	£597
5 Days • 4 nights All year	£697

Prices per person including all transfers, English-speaking guide, accommodation, excursions and meals as shown. Flights can be added to a Chile Airpass at an additional cost, please enquire for further details.



Osorno volcano, Day 6

WINE REGION, LAKES & VOLCANOS

web veloso.com/villarrica

Self Drive - The Villarrica Tour

12 night itinerary:

Santiago - 2 nights • Valparaíso - 2 nights

Santa Cruz - 2 nights • Chillán - 1 night

Pucón - 3 nights • Puerto Varas - 2 nights

Optional extensions: *Skorpis II Cruise* (see page 96),

Torres del Paine (see page 98-99), *Atacama desert* (see page 94)

Days 1-3 Depart on the overnight flight to Santiago de Chile. On arrival transfer to your hotel with an afternoon tour of the city's grand squares, European-style central market, and the Cerro San Cristóbal - reached by funicular railway for superb panoramic views of the city. (B)

Days 4-5 Transfer to collect your self drive vehicle and briefing, maps and itinerary description. You have contact details for all hotels booked along your route. Drive to Valparaíso, a beautiful historic city and UNESCO World Heritage site surrounded by hills and overlooking the Pacific Ocean. Explore on foot the artistic neighbourhoods perched on the hillsides with its winding streets and interconnecting stairs. (B)

Days 6-7 Drive south to the picturesque town of Santa Cruz in the Colchagua Valley famous for its excellent wines, staying for 2 nights. Explore the surrounding countryside and wineries of "La Ruta del Vino" (The Wine Route). (B)

Day 8 Continue south along the Andes to Chillán. Overnight at a local hotel. (B)

Days 9-11 Drive to the beautiful Chilean Lake District and the town of Pucón, staying for 3 nights with spectacular views of Lake Villarrica, surrounded by mountains, forest and waterfalls. Pucón is famous for its pristine scenery with snow-capped volcanoes, crystal clear lakes and rivers, thermal baths and national parks. You can locally arrange numerous activities such as trekking, rafting, mountain biking, horse riding and guided walks. (B)

Days 12-13 Continue south to Puerto Varas located on Lake Llanquihue, near Petrohué Falls and Lago Todos Los Santos, whose deep, clear, emerald green waters are crowned by the perfectly conical snow-capped peak of Osorno volcano. Two days to explore the area at your own pace, with walks and boat trips. Nearby is Chiloé, with its unique blend of isolated island culture, small fishing communities, and incredible wooden UNESCO-listed churches. (B)

A magnificent journey through stunning mountain scenery of majestic volcanoes, lakes and picturesque villages, for you to explore, make stops and detours and enjoy famous Chilean wines, relaxing hot springs and walking in the countryside. All hotels and your car are provided together with local support, assistance and maps with a suggested route and places of interest.

Day 14 Drive to Puerto Montt airport, where you return the car and fly to Santiago, connecting with the overnight flight home, arriving on Day 15. (B)

The Villarrica Tour departs every day - 15 days including 12 nights' accommodation and breakfast (B), all flights (2 overnight), transfer and briefing on arrival, car hire as described, maps, local assistance and drop-off charges.

Extension to ARGENTINA:

Days 12-15 Drive from Pucón across the Argentinean border to San Martín de Los Andes for 1 night and on to Bariloche for 3 nights. Day 16 - 17 Cross the Lake District from Bariloche to Osorno and continue to Puerto Varas. Day 18 Return overnight flight home, arriving Day 19.

Please take note that the above itinerary is a suggestion that can be extended or reduced according to your preference.



Mountain road



Mountain lake in the summer



Petrohué falls near Puerto Varas



Winery outside Santa Cruz

PRIVATE INDIVIDUAL TOUR GUIDELINE PRICES

	Tourist /First - (Self Drive)	
	2 Sharing	Own Room
Villarrica Tour		
1 Jan-30 Jun, 6 Sep-17 Dec	£2774	£3436
1 Jul-5 Sep, 18 Dec-31 Dec	£2861	£3523

Self drive prices are per person including self-drive vehicle Chevrolet Corsa 1.6 or similar with air-conditioning and unlimited mileage, accommodation at first class hotels, breakfast, assistance from our local representatives.

FLIGHTS ARE INCLUDED on IBERIA and LAN departing from UK Airports, Internal Flights and Taxes. UPGRADE to Business Cabin seat add: £2119 in High Season / £2206 in Low Season

GUIDELINE TOUR PRICES are all per person, subject to availability, as all services are booked when you pay your deposit. Please refer to our website veloso.com for current prices and any special offers available. To obtain a Guaranteed Price for your travel dates, please call 020 8762 0616, email travel@veloso.com, or contact our appointed travel agents. Prices for Special Events, New Year's Eve, Christmas, Easter on request.

TAILOR-MADE SERVICE: We can prepare a personalised itinerary to fulfil your requirements.



ATACAMA DESERT EXPEDITIONS

CHILE



The Atacama mountain desert in the arid northern region of Chile is an extreme and surreal desert landscape of volcanoes, geysers and high altitude mineral lakes of deep blue, yellow and green colours. The clear night sky is ideal for star gazing in a natural planetarium. The desert holds a wide variety of wildlife such as vicuñas, flamingoes, Darwin's Rhea. The town of San Pedro de Atacama is an oasis of green amid the void.

4 days • 3 nights

Choice of hotels shown below

Day 1 Arrive at Calama Airport and transfer to San Pedro de Atacama, with stunning views of the mountains en route. Afternoon visit to the Moon Valley, an otherworldly experience walking through canyons and over dunes, and watching the sunset over the surreal landscape. (B)

Day 2 In the morning visit the town of San Pedro and its local 17th century church complete with cactus

roof, as well as the ruins of Pucara de Quito, the oldest human settlement in the area. Depart for Toconao, a town built of white volcanic stone. Continue to the Salar de Atacama, the vast salt lake and remains of an ancient sea, now home to graceful flamingos. (B,L)

Days 3-4 A very early start to catch the high altitude Tatio Geysers at their best and see a spectacular display of searing steam and water shooting high into the air at dawn. There is also a chance for a warming dip in the mineral hot springs. Next day transfer to Calama airport. (B)

Continue your expedition:

Stay another night in San Pedro to explore more of the desert on guided excursions, or journey across the border into Bolivia to visit the magnificent Uyuni Salt Flats. See *The Laguna Tour*, p.40, for details.



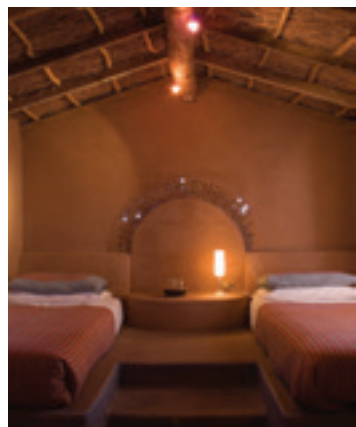
Don Tomas *Tourist*

A simple hotel located on the outskirts of the town of San Pedro, La Casa de Don Tomas is built in the desert style to blend with its environment, and is an ideal base from which to explore the desert. The rooms are clean, comfortable and spacious, all with modern furnishings and private facilities. There is a restaurant serving Chilean and International cuisine, a patio for relaxing outdoors and a swimming pool with views of the surrounding mountains and volcanoes.



Altiplanico *First*

Located in spacious grounds on the edge of San Pedro, the Altiplanico hotel was built using local materials of adobe, stone and straw, with natural colours to enhance its local character. The 29 rooms are arranged in 3 semicircles with cultivated land in between, and each has a terrace facing the Andes and is decorated in traditional Atacameño style with private bathroom - some also have an outdoor shower. There is a swimming pool, restaurant and a fire pit where guests can gather in the evening.



Terrantai *First*

Terrantai is hidden in the heart of San Pedro, next to an ancient church, in the guise of a traditional Atacama house. Built from local stone, adobe and wood, the hotel has a warm and welcoming atmosphere, with a large internal patio and swimming pool. There are 21 comfortable rooms all with private facilities, and a pleasant outdoor restaurant which captures the cool breeze. Due to its location, the local restaurant and bars are only a short walk away.



PRICES - ALL YEAR

NO OF TRAVELLERS	1 SINGLE	2 SHARING
ATACAMA LODGES		
Alto Atacama		
4 days • 3 nights	£1812	£1397
5 days • 4 nights	£2240	£1734
Awasi*		
4 days • 3 nights	£2480	£1640
5 days • 4 nights	£3170	£2114
Tierra Atacama		
4 days • 3 nights	£1680	£1358
5 days • 4 nights	£2044	£1716
Explora		
4 days • 3 nights	£2298	£1644
5 days • 4 nights	£2987	£2298
HOTELS IN SAN PEDRO		
Terrantai		
4 days • 3 nights	£1348	£704
5 days • 4 nights	£1533	£797
Altiplanico		
4 days • 3 nights	£1144	£661
5 days • 4 nights	£1563	£878
Don Tomas		
4 days • 3 nights	£998	£578
5 days • 4 nights	£1212	£705

Prices per person including shared transport to/from Calama airport, shared excursions with English-speaking guide, accommodation. Lodges are full board, hotels in San Pedro are bed and breakfast. *Awasi offers fully private services throughout.





ATACAMA LODGES

Explora First Superior

Covering an area of 17 hectares outside the town of San Pedro, Explora is a complex of gardens and walkways with modern architecture, comfortable accommodation and facilities. Newly renovated in 2016, the lodge has its own stables offering a variety of horse riding excursions, as well as its own covered observatory for astronomy. Explora's speciality is its 'Explorations', more than 40 activities ranging from sightseeing to more adventurous biking and trekking.

Tierra Atacama First

Tierra Atacama Hotel & Spa is located on the outskirts of San Pedro. Designed in the modern style with large windows, the lodge has excellent facilities, with spacious and well equipped rooms, each with views of the Licancabur volcano. Guests can combine active enjoyment of the desert with tranquility and the spa: there is a choice of daily guided hikes and sightseeing excursions, as well as biking or horse riding, all in small groups. There is a pool, restaurant, outdoor fire pits, and full spa.

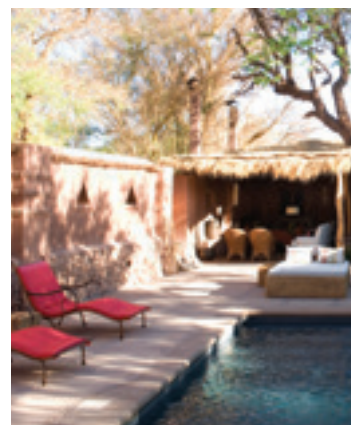
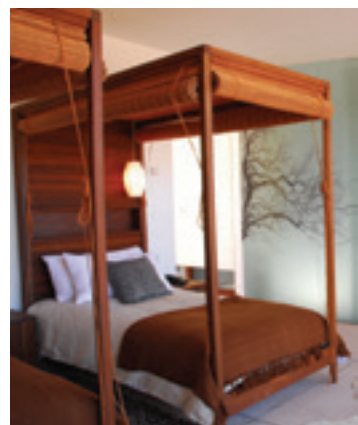
Awasi Deluxe Boutique



A small luxury hotel in the style of a local house made from adobe, stone, wood and thatched roofs, Awasi's central concept is All-Inclusive Tailor Made. All transfers and excursions are by 4x4 vehicle with a private guide, designed each day to your interests and preferences. Awasi is a member of **Relais et Chateaux**, promising world class hospitality and dining throughout your stay. There are 8 spacious suites, a pool with comfortable deck chairs to relax during the day, and at sundown a fire is lit for a cosy and intimate atmosphere.

Alto Atacama First Superior

Alto Atacama offers high quality accommodation in the atmospheric setting of a desert village. Located 3km outside the town of San Pedro, the lodge is a peaceful place to relax or enjoy the many excursions with expert guides, including sightseeing, biking and walking. The rooms and suites are spacious, comfortable and decorated with local crafts. The cuisine is excellent, and there is an award-winning spa along with 6 swimming pools and a private open-air observatory for guided star-gazing.



PATAGONIA CRUISES



FJORDS, HOT SPRINGS & GLACIERS

web veloso.com/skorpios

A cruise through stunning scenery of fjords and lush mountains, passing beautifully sculpted icebergs, to the awe-inspiring San Rafael Glacier.

Skorpios II 6 days • 5 nights

First Class Ship - 55 Cabins - Maximum 130 passengers

THE CHONOS ROUTE

Departs Saturdays : Puerto Montt - San Rafael Lagoon - Chiloé Island - Puerto Montt

Day 1-2 Depart from Puerto Montt and sail through the scenic Llanquihue Archipelago. Sail through the Moraleda Channel to visit the charming fishing village of Puerto Aguirre. Continue to Ferronave and Pilcomayo Channels to anchor near San Rafael Glacier. (B,L,D)

Day 3 Sail up the Iceberg Channel to view the mighty San Rafael Glacier. Full day to admire this impressive sight, it is possible to transfer to a smaller boat to get a closer view. Depart early evening for the beautiful Quintralco Fjord. (B,L,D)

Day 4-6 Anchor at Quintralco and spend the day relaxing in the outdoor and

indoor thermal baths. Depending on the weather conditions, a boat trip can be made further up the fjord. Continue overnight to Melinka Island, in the Chonos Archipelago, once a remote hideaway for ruthless pirates.

Continue across the Gulf of Corcovado and skirt the eastern shores of Chiloé Island to anchor at Castro and visit the island to see its wooden houses on stilts and handicraft market. Late evening departure to Puerto Montt through the Straits of Castro and Calbuco Channel. Arrive in Puerto Montt Thursday in the early morning, breakfast and disembark. (B,L,D)

Skorpios III 4 days • 3 nights

Deluxe Ship - 45 Cabins - Maximum 110 passengers

THE KAWESKAR ROUTE

Departs Tuesdays or Fridays from Puerto Natales back to Puerto Natales

Day 1 Arrival at Punta Arenas and transfer to Puerto Natales to board the ship and start sailing along the myriad of Patagonias channels. (D)

Day 2 Arrival and view the Amalia Glacier, continue to El Brujo Glacier. Weather permitting, disembark on a rock for a close view of the glacier. During lunch, sail to Calvo Fjord and

afternoon excursion on a special motor boat, to view the glaciers. Set sail to Montanas Fjord. (B,L,D)

Day 3 Visit Montanas Fjord where five glaciers come down from Sarmiento Mountain to the sea. Soft trek to Bernal Glacier. Visit the Alsina and Paredes Glaciers and set sail along Kirke Narrowness crossing.



Excursions ashore on the Skorpios cruise



Cabin on the Skorpios

Captain's Farewell dinner. Arrive in Puerto Natales at night. (B,L,D)

Day 4 Disembark and transfer back to Punta Arenas airport. (B)

Combine the Skorpios cruise with a stay at Torres del Paine (pages 98-99) for walking, trekking and sightseeing, before or after this exciting cruise.

PRICES

2 SHARING CABIN		5 NIGHTS	3 NIGHTS
SEASONS DECKS		SKORPIOS II	III
LOW	Atenas	£1518	£1263
	Acropolis	£1585	£1346
	Parthenon	£1618	£1413
	Olympo	£1685	£1480
	Athos	£1752	£1546
HIGH	Atenas	£1652	£1370
	Acropolis	£1718	£1453
	Parthenon	£1752	£1520
	Olympo	£1818	£1586
	Athos	£1918	£1686

All prices are per person including transfers to/from Puerto Montt or Punta Arenas airport, cabin of your choice, full board (B,L,D), open bar and guided excursions. All Inclusive.

Skorpios II - Friday night aboard before departure costs £148 per person including dinner.

Skorpios III - Additional night at Indigo Hotel, Puerto Natales, before departure costs £320 per person including dinner, breakfast and full day excursion to Torres del Paine National Park.

SEASONS:

High - January to February
Low - March to December

DESERTS & GLACIERS



Discover contrasting landscapes with the Atacama desert, volcanic Hot Springs and Salt Flats in arid northern Chile, followed by the icy fjords and Glaciers of Tierra del Fuego. Enjoy the wonderful facilities of your desert lodge, before setting sail on a comfortable cruise ship to experience the remotest reaches of Southern Patagonia.



Cruising the Chilean Fjords

Skorpios II Cruise • Fjords & San Rafael Glacier

Days 1-3 Depart Thursday on Iberia or LAN Airlines flight via Madrid to Santiago, arriving the following morning. Next day we have a scenic tour of Santiago surrounded by mountains. (B)

Atacama Desert

Days 4-6 Flight to Calama, up in the Andean mountains and transfer to San Pedro de Atacama for three nights staying at Alto Atacama, a modern desert architecture lodge, including all meals and daily excursions (see page 94-95). Guided excursions include: visit to Toconao and the Atacama Salt Flats, the Tatio Geysers, walking in the Valley of the Moon ending at sunset, ruins of Pucará de Quitor and Chiu-chiu. (B,L,D)

Days 7-8 Afternoon transfer to Calama, fly to Santiago and transfer to Valparaíso, staying for 2 nights. Next day walking tour of this historic city, including the colourful hillside neighbourhoods, art galleries, cafés, and the home of poet Pablo Neruda. (B)

AZUL TOUR - Individual Tour		
Departures every Thursday, September to April		
NO OF TRAVELLERS	1	2
SEASONS	SINGLE	SHARING
Low (5Mar-19Dec)	£7724	£5690
High (20Dec-4Mar;)	£7814	£5838

Prices shown are per person including 17 days, 14 nights accommodation, 2 overnight flights and all internal flight, meals as shown on the itinerary, all inclusive cruise, transfers and guided excursions. Flights in economy on Iberia or LAN. Flight departures from London Heathrow. Regional airports add £80. BUSINESS Class upgrade £2136. Own Room Option, add: Low £1417/High £1624 Does not operate May to August.

Day 9 Transfer to Santiago, fly to Puerto Montt, transfer to the pier, board the Skorpios II ship (Shown on facing page 96), staying your first night at the port. (B,D)

Days 10-14 Morning tour to the lake region visiting Puerto Varas and Petrohue waterfalls. Afternoon start of your 5 night cruise on the Chonos Route through the Chilean Fjords to Laguna San Rafael Glacier as described on page 96. (B,L,D)

Days 15-16 Disembark in Puerto Montt. Transfer to the airport and fly to Santiago, staying for 1 night. Morning free before being taken to the airport for your overnight flight home, arriving Day 17. (B)

It is possible to cruise on Skorpios III, Kaweskar Route (p.96). Please enquire.



The Azul Tour

14 night itinerary

Santiago - 2 nights

San Pedro de Atacama - 3 nights

Valparaíso - 2 nights

Skorpios II Puerto Montt - 1 night

Skorpios II Cruise - 5 nights

(Alternatively Skorpios III - 3 nights)

Santiago - 1 night

web veloso.com/azul

The Azul Tour departs on Thursdays

from September to April - 17 days

INCLUDING: 14 nights accommodation and breakfast (B), all flights (2 overnight), transfers, excursions, English-speaking guides, transport and meals (B,L,D) as shown. Please see pages 190-193 for further details of what is included.



TORRES DEL PAINE NATIONAL PARK

web veloso.com/torres

Torres del Paine National Park encompasses an area of stunning mountain scenery where thick forest vies with barren pampa, turquoise lakes are decorated with glaciers and sculpted icebergs, and the magnificent granite pillars of the Torres soar skywards. A network of marked trails makes it easy to hike this remote area for fabulous views and unforgettable sightings of an array of wildlife that includes condors.

3 or 4 nights in Torres del Paine National Park

Day 1 You will be met at your hotel or the airport in Punta Arenas and drive north across the pampa to Puerto Natales. You will be met by a driver who will take you to Torres del Paine National Park. (Or transfer directly depending on your chosen lodge.)

Days 2-4 You have either two or three full days to explore the National Park. Choose between full day excursions, trekking and sightseeing in the park, including a cruise to see the Grey Glacier. Please refer to the map below for duration, route and gradient of the walks.

Day 5 Return to Punta Arenas for your onward journey.



Los Cuernos, Ascension Valley Trek, Torres del Paine National Park

TOWERS 'W' TREK

6 days • 5 nights

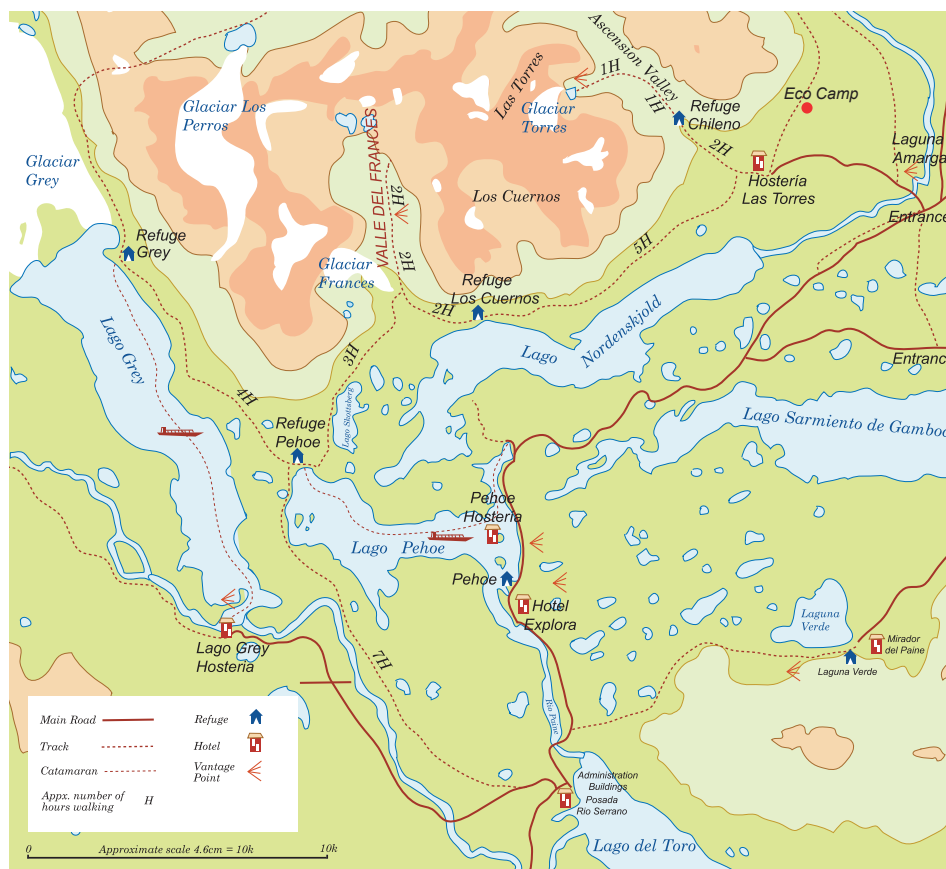
The W-shaped route along Ascension Valley, Valle del Frances and Grey Glacier, takes in the most beautiful sights of the national park, but is suitable only for fit and experienced trekkers (of any age) who can walk for between 6 and 9 hours per day over four consecutive days with two 1 hour uphill stretches. The itinerary includes accommodation in 4 mountain refuges: Refugio Central next to Hosteria Las Torres offers a proper bed for the first and last night, then one night at Refugio Chileno, Los Cuernos and Paine Grande, all with wholesome meals, shared rooms with 6 to 8 bunks, communal showers (hot water) and toilets. This trek is self-guided but once a month in season there is a group guided departure.



Trekking Torres del Paine National Park



Refugio Chileno at Torres del Paine



Hosteria Las Torres First

This former estancia is now a comfortable hotel in a perfect location for the strenuous but awe-inspiring hike to the base of the Torres. A number of trails of varying degrees of difficulty can be explored from here, and horses can be hired. Good restaurant and living room with open fire. There is also a 'refugio' with beautiful views of the Torres at sunrise. Las Torres is closed between May and September.



PRICES

ALL YEAR	3 Nights	4 Nights	5 Nights
W Trek	N/A	N/A	£887
Las Torres	£755	£864	£973
Awasi	£1954	£2334	£2798
Patagonia Camp	£812	£1278	N/A
Lago Grey	£834	£977	£1121
Explora	N/A	£2359	N/A

Prices shown per person sharing a Standard room for Double Occupancy including shared transfers to/from Punta Arenas, accommodation and breakfast at Hosteria Las Torres and Lago Grey. Other lodges include daily guided excursions, all transport and full board (all meals). Please enquire for prices for single occupancy, triple rooms, rooms with a view and suites.



Lake Peboe & Torres del Paine

Hotels in Puerto Natales: Remota Lodge, The Singular, Altiplanico Sur, Indigo Patagonia Hotel & Spa



Awasi

Deluxe



Awasi Patagonia is located in a private reserve just outside Torres del Paine national park, with impressive views of the Torres and Lake Sarmiento. Its 12 luxury villas are constructed from local materials, each with a fireplace and large windows which capture the best views of the park. Guests are assigned a private guide and 4x4 vehicle so that excursions can be taken inside the park or around the private reserve, whatever their preference.



Patagonia Camp

First

Located at the shores of Lago el Toro, this camp has 15 luxury yurts specially designed to resist the Patagonian wind, rain and snow. Each yurt has a private bathroom and terrace and is equipped with kingsize beds and heating. You can relax in the lounge, enjoy dinner prepared by the chef or take part in a typical Patagonian barbecue. There are expert bilingual staff for excursions should you require, and accommodation includes breakfast and dinner.



Lago Grey

Tourist Superior

Looking out across the lake, this lodge was designed to blend in with the surrounding forest of lenga trees. From here you can walk to Península Grey, a craggy outcrop surrounded by icebergs, directly opposite the glacier face. You can get even closer by taking a boat trip from the lodge to the glacier. All rooms have private facilities and central heating and its restaurant and bar have great views of Grey Glacier.



Explora

Deluxe

Explora is located in the centre of the Park, and has modern decoration with large windows to view the superb landscape facing the lake and the Paine Massif. It has 49 comfortable rooms, all in wood, fully equipped with a bath but no TV. It has a heated indoor swimming pool, sauna and open air jacuzzis and horse riding. Excursions and airport transfers are included and provided in a group with their own specialist guides and drivers.